

Challenger Lifts



Model#: CS1220
Heavy-Duty Inground Lift
12,000 lb. lifting capacity

Heavy-Duty Inground Lifts

Challenger Lifts Heavy-Duty Inground Lifts are ideal for starting or expanding your commercial fleet service capabilities. Heavy-Duty Inground Lifts require less shop space than surface mounted lifts, maximizing the number of service bays.

The CS1220 is equipped with standard, medium and high extension stack adapters to accommodate a wide variety of Heavy-Duty vehicle pick up points. Challenger Heavy-Duty Inground Lifts are fully contained in a recycled polymer housing to protect your investment and the environment.

Challenger is the exclusive manufacturer of the only 15,000 lb. capacity inground lift in the market. The CS1520 Heavy-Duty arms are engineered to lift heavier commercial vehicles.

Features & Benefits:

- Standard combination stack screw pads accommodate a wide range of vehicle pick up points
- Heavy-Duty 8 1/2" piston diameter reduces wear while lifting Heavy-Duty vehicles
- Fully contained polymer container minimizes risk of hydraulic fluid seeping into the ground as associated with low pressure inground lifts
- 50% taller bearing contact than competitor models provides increased stability
- Mechanical lock engages every 3" allowing technician to work at an ergonomic height to increase productivity and minimize fatigue
- Stainless Steel air lock release cylinder prevents rust associated with condensation
- Many accessories available - reference the Challenger Lifts EnviroLift Accessories sheet for details

Need a 15,000 lb. Inground Lift?

Challenger Lifts is the exclusive manufacturer of the only 15,000 lb. capacity inground cassette lift in the market.



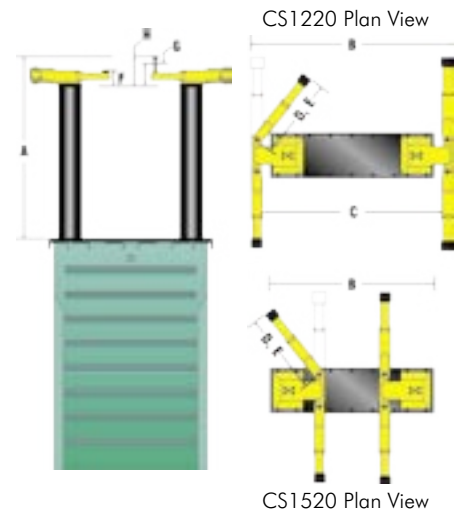
For more information, contact your Authorized Challenger Lifts Distributor:

Model Number	CS1220	CS1520
Lifting Capacity	12,000 lb. (5442kg)	15,000 lb. (6806kg)
A Rise Height ¹	81" (2057mm)	84 1/4" (2140mm)
Stroke	68" (1727mm)	
B Width Overall	99" (2515mm)	71 1/2" (1816mm)
C Drive-Thru Clearance	87" (2210mm)	NA
D Reach (Arm Minimum)	32" (813mm)	26 1/4" (667mm)
E Reach (Arm Maximum)	49 1/4" (1251mm)	43" (1092mm)
F Adj. Adapter Height ²	5 3/8"-7" (136.5-178mm)	6 1/2"-8 1/4" (165-210mm)
G Adj. Adapter Height ² (with Medium Extensions)	8 3/8"-10" (213-254mm)	10 1/2"-12 1/4" (267-311mm)
H Adj. Adapter Height ² (with High Extensions)	11 3/8"-13" (289-330mm)	14 1/2"-16 1/4" (368-413mm)
Capacity (per arm)	3,000 lb. (1361kg)	3,750 lb. (1701kg)
Motor	2HP	2HP
Voltage (1 Phase Std.) ³	208v-230v	208v-230v
Speed of Rise	65 Sec.	80 Sec.
Air Required	75-125 psi	75-125 psi
Recommended Ceiling Height (plus height of tallest vehicle)	82" (2083mm)	85" (2159mm)

¹ Rise height is measured with superstructure in highest position.
² Medium and high auxiliary adapter extensions are standard.
³ Optional 3 phase power unit also available, please specify at time of order.

standard features:

- 2 high extensions
- 4 medium extensions
- 4 standard adapters



The Automotive Lift Institute (ALI) certifies that the CS1220 & CS1520 described herein comply with the applicable provisions of the American National Standards ANSI/ALI ALCTV 2006 and are Third Party Validated by the ETL Testing Laboratory.

CHALLENGER LIFTS, INC. Phone Toll-Free: 800-648-5438
 200 Cabel Street 502-625-0700
 Louisville, Kentucky 40206 Fax: 502-625-0711
 E-mail: sales@challengerylifts.com

Challenger Lifts, Inc. reserves the right to make changes to specifications without notice and without making changes retroactive. Unloading, installation and oil not included.